



THE VISTA
AT TWENTY MILE

PONTE VEDRA. *Naturally.*

La Avila

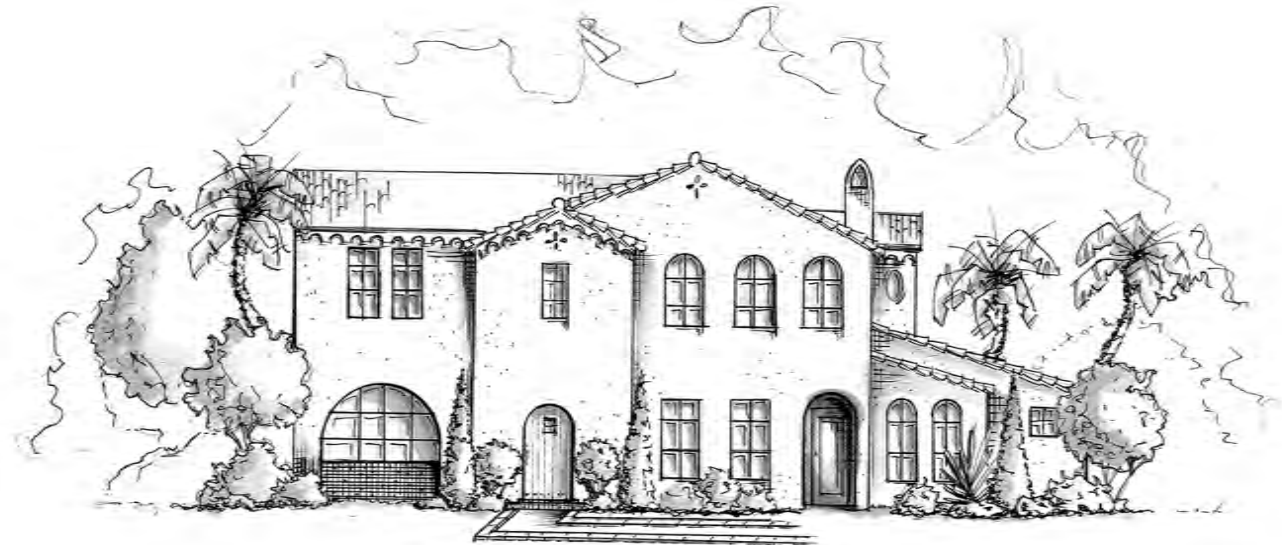
Andalusian



Spanish Colonial



Spanish Eclectic

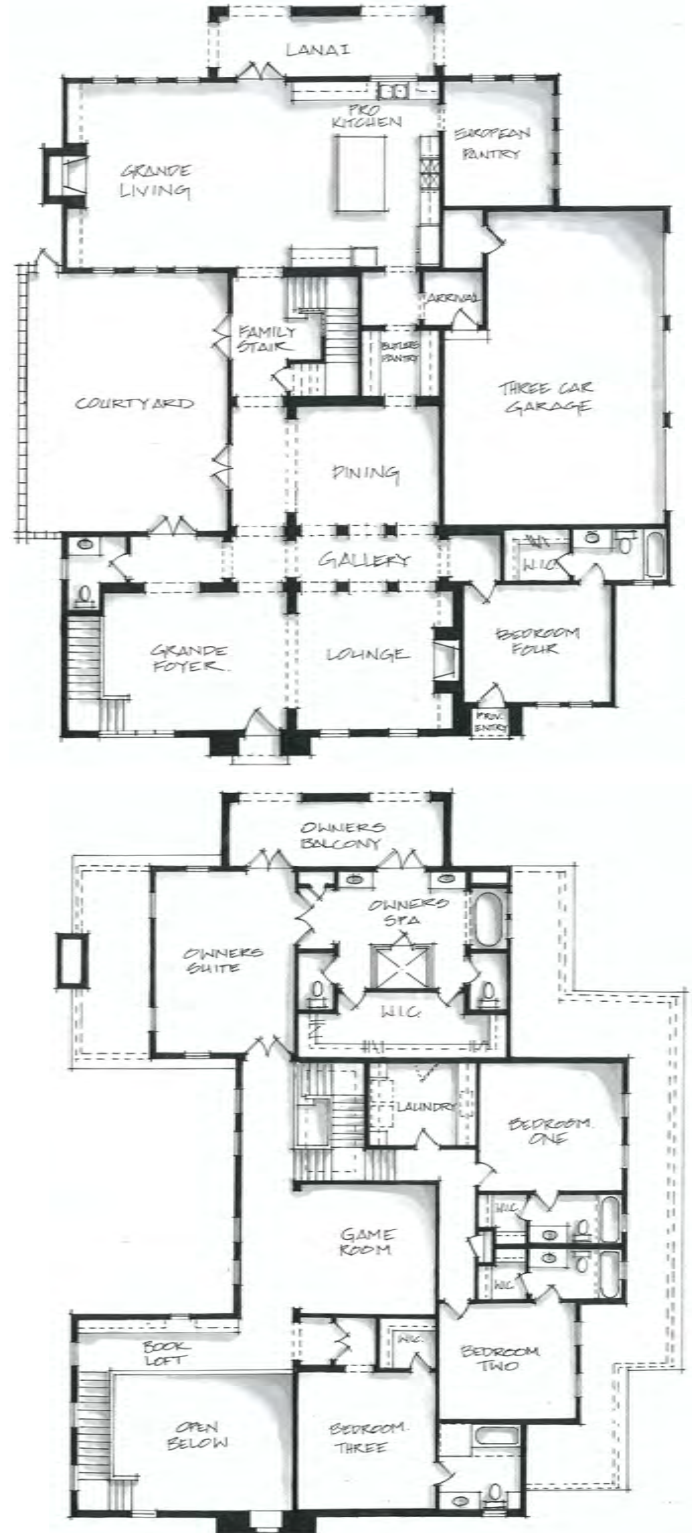




La Avila

- 5,850 Total Living
- 644 Open Courtyard
- 5 Bedrooms
- 5 Full Bathrooms plus Powder

This beautifully designed custom courtyard home features owner's suite with two double French doors to private balcony and owner's spa and massive walk-in shower on second floor with conveniently located laundry room adjacent to owner's suite, a two story grande foyer entrance with formal staircase, professionally designed kitchen equipped with Bosch appliances, The Pineapple Collection by Dura Supreme cabinetry throughout, solid surface counter tops, grande living with masonry fireplace, second staircase for family, gallery hallway, three car garage, and many additional luxurious features. This home truly exemplifies THE ART OF TIMELESS DESIGN.



The Pineapple Corporation reserves the right to make changes or modifications to sales releases, prices, location premiums, maps, plans, specifications, materials, features, and colors without notice. Optional features and colors may be included at additional cost, subject to availability and construction cut-off dates.

Special wall and window treatments, upgraded floor coverings, softscapes, hardscapes, landscapes, and other items featured in an around the model homes are designer suggested and not included in the purchase price. All renderings, floorplans, and maps are artist conception and are not intended to be an actual depiction of the buildings, fencing, walks, driveways, or landscaping. Plans to buildout this project are subject to change without notice.

