



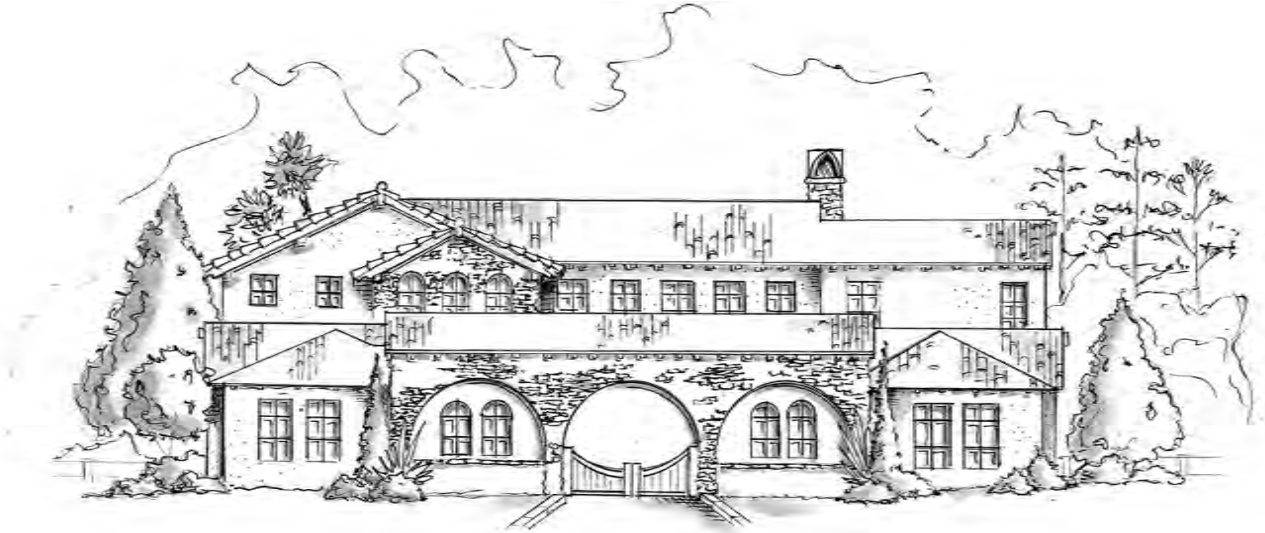
THE VISTA

AT TWENTY MILE

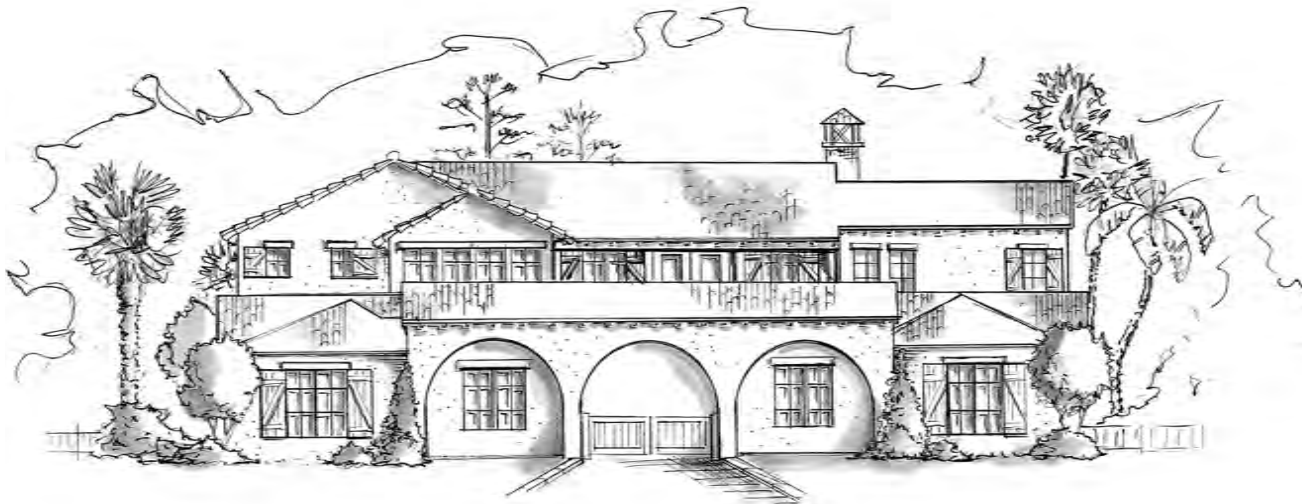
PONTE VEDRA. *Naturally.*

Atrio Grande

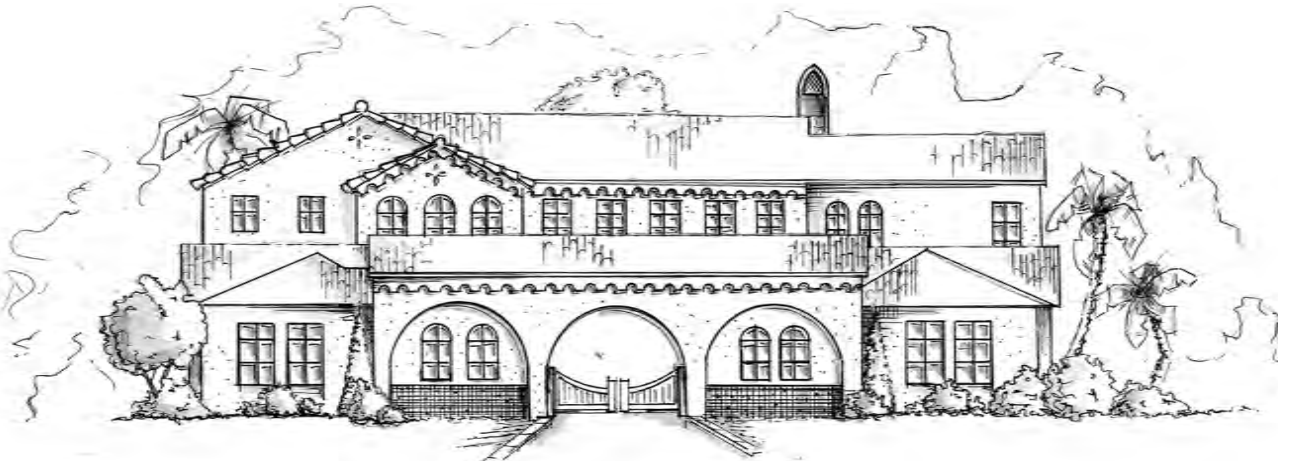
Andalusian



Spanish Colonial



Spanish Eclectic

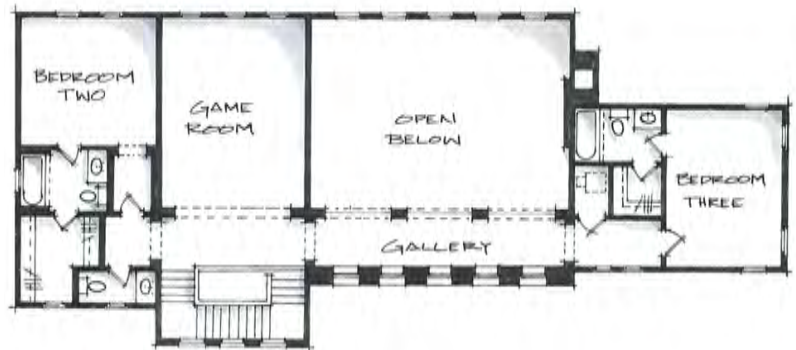




Atrio Grande

- 5,430 Total Living
- 1,180 Open Courtyard
- 4 Bedrooms
- 4 Full Bathrooms plus two Powders

This stunning auto courtyard home provides exceptional opportunity for multi-generational living or private space for guests and multiple options for the owners retreat. Entrance through the porte cochere provides owners with secluded courtyard and a four car garage layout. The main house features open grande living room, professionally designed kitchen equipped with Bosch appliances package, The Pineapple Collection cabinetry by Dura Supreme throughout, European pantry for multiple use options, gallery hallway on second floor overlooking grande living room with iron railings, owners suite and spa and large walk-in shower, and two conveniently located powder rooms. A true masterpiece of TIMELESS DESIGN!



The Pineapple Corporation reserves the right to make changes or modifications to sales releases, prices, location premiums, maps, plans, specifications, materials, features, and colors without notice. Optional features and colors may be included at additional cost, subject to availability and construction cut-off dates.

Special wall and window treatments, upgraded floor coverings, softscapes, hardscapes, landscapes, and other items featured in an around the model homes are designer suggested and not included in the purchase price. All renderings, floorplans, and maps are artist conception and are not intended to be an actual depiction of the buildings, fencing, walks, driveways, or landscaping. Plans to buildout this project are subject to change without notice.

