



THE VISTA

AT TWENTY MILE

PONTE VEDRA. *Naturally.*

Casa León

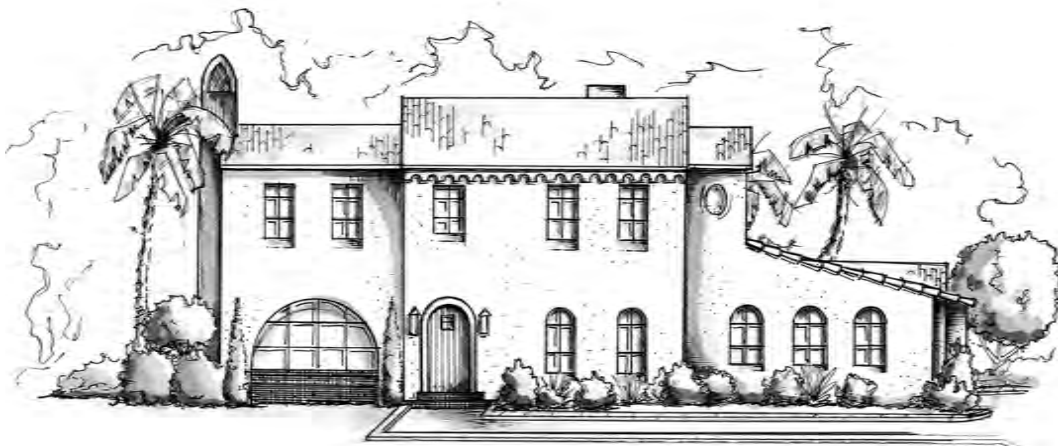
Andalusian



Spanish Colonial



Spanish Eclectic

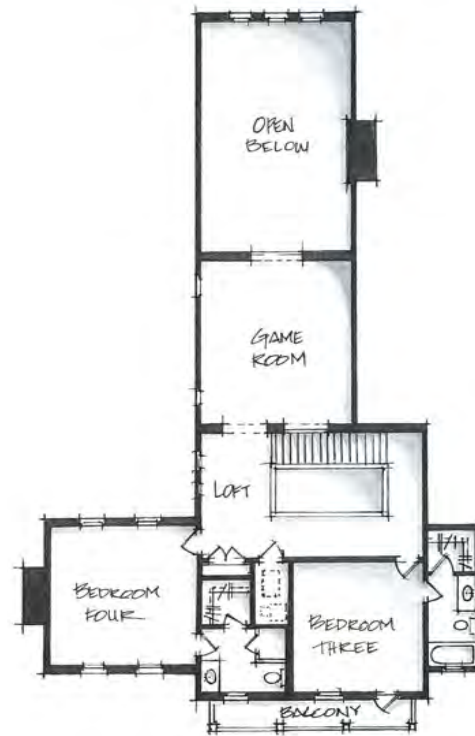
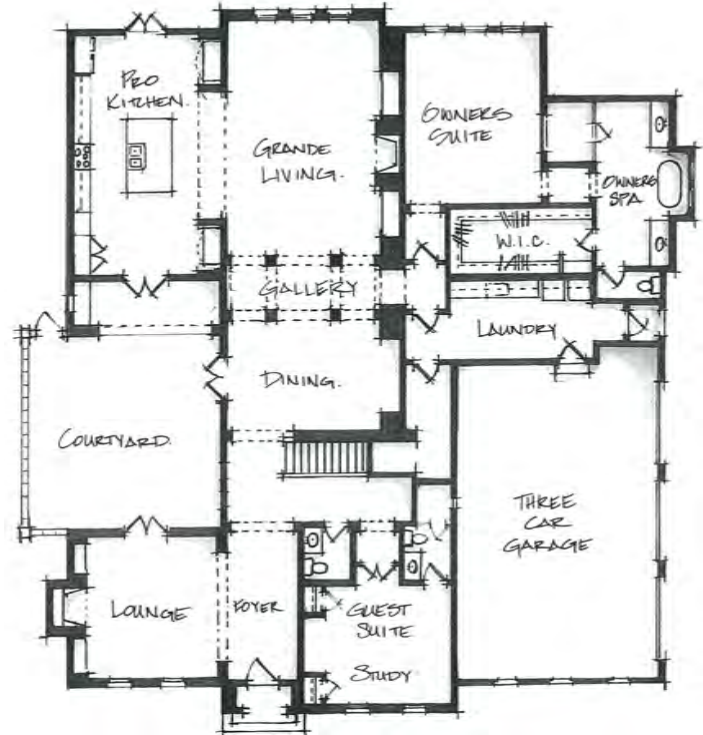




Casa León

- 4,840 Total Living
- 448 Open Courtyard
- 4 Bedrooms
- 4 Full Bathrooms plus Powder

This uniquely custom designed courtyard home features foyer entrance, lounge with masonry fireplace, guest suite/study, two secondary bedrooms, owners suite and spa, and large walk-in shower, spacious owners walk-in closet, formal dining, grande living with masonry fireplace, a gallery hallway, professionally designed kitchen with Bosch appliance package, The Pineapple Collection by Dura Supreme cabinetry, solid surface counter tops throughout, covered lanai off kitchen, three car garage and a multitude of luxurious finishes. Experience THE ART OF TIMELESS DESIGN in this masterfully designed home.



The Pineapple Corporation reserves the right to make changes or modifications to sales releases, prices, location premiums, maps, plans, specifications, materials, features, and colors without notice. Optional features and colors may be included at additional cost, subject to availability and construction cut-off dates.

Special wall and window treatments, upgraded floor coverings, softscapes, hardscapes, landscapes, and other items featured in an around the model homes are designer suggested and not included in the purchase price. All renderings, floorplans, and maps are artist conception and are not intended to be an actual depiction of the buildings, fencing, walks, driveways, or landscaping. Plans to buildout this project are subject to change without notice.

