



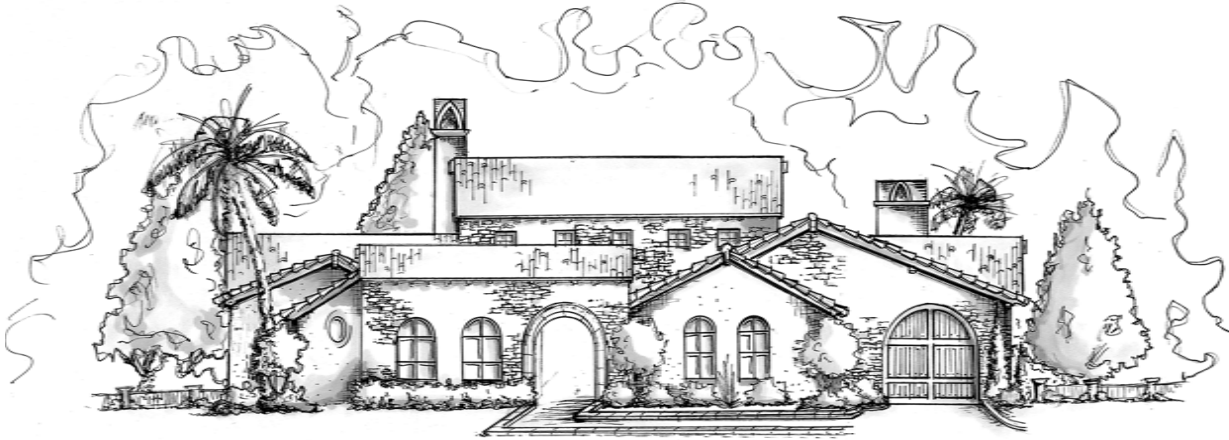
THE VISTA

AT TWENTY MILE

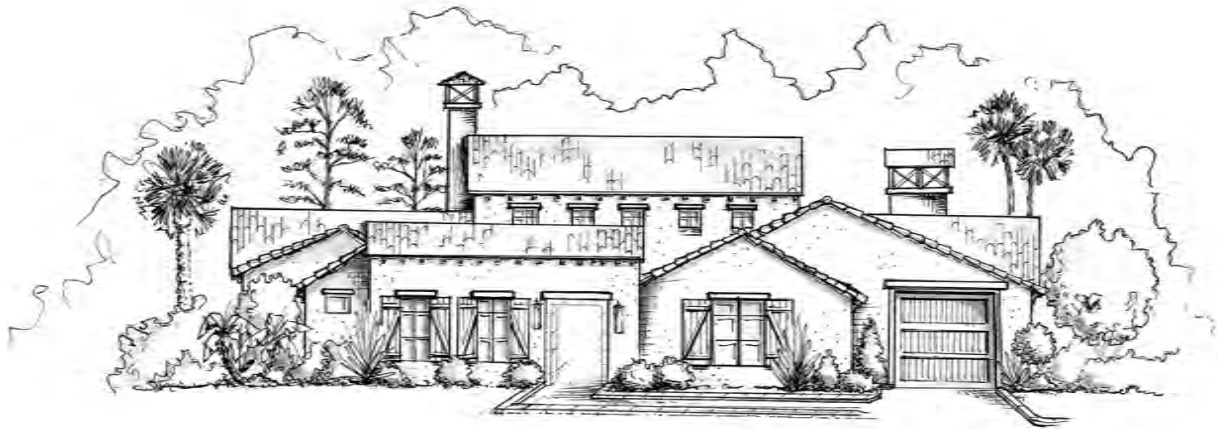
PONTE VEDRA. *Naturally.*

The Catalonian

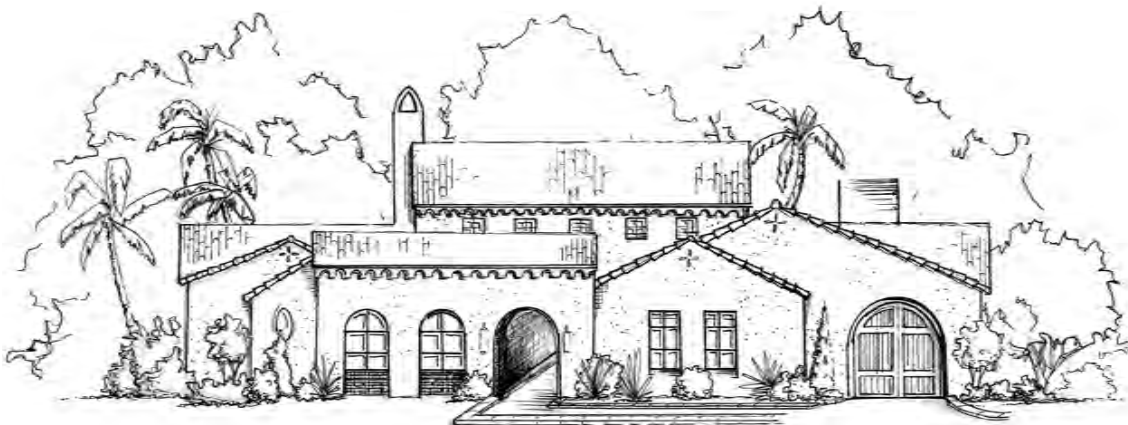
Andalusian



Spanish Colonial



Spanish Eclectic





The Catalonian

- 4,270 Total Living
- 418 Open Courtyard
- 4 Bedrooms
- 4 Full Bathrooms plus Powder

This one story masterfully designed entry courtyard home features guest casita, two secondary bedrooms with en suite bathrooms, owner's retreat and spa, lounge, grande living with masonry fireplace and French doors to covered lanai, professionally designed kitchen equipped with Bosch appliance package, The Pineapple Collection by Dura Supreme cabinetry throughout, hearth room with masonry fireplace with two double French doors, walk-in closets in secondary bedrooms, and three car garage. A TIMELESS DESIGN thoughtfully created for your modern family lifestyle.



The Pineapple Corporation reserves the right to make changes or modifications to sales releases, prices, location premiums, maps, plans, specifications, materials, features, and colors without notice. Optional features and colors may be included at additional cost, subject to availability and construction cut-off dates.

Special wall and window treatments, upgraded floor coverings, softscapes, hardscapes, landscapes, and other items featured in an around the model homes are designer suggested and not included in the purchase price. All renderings, floorplans, and maps are artist conception and are not intended to be an actual depiction of the buildings, fencing, walks, driveways, or landscaping. Plans to buildout this project are subject to change without notice.

